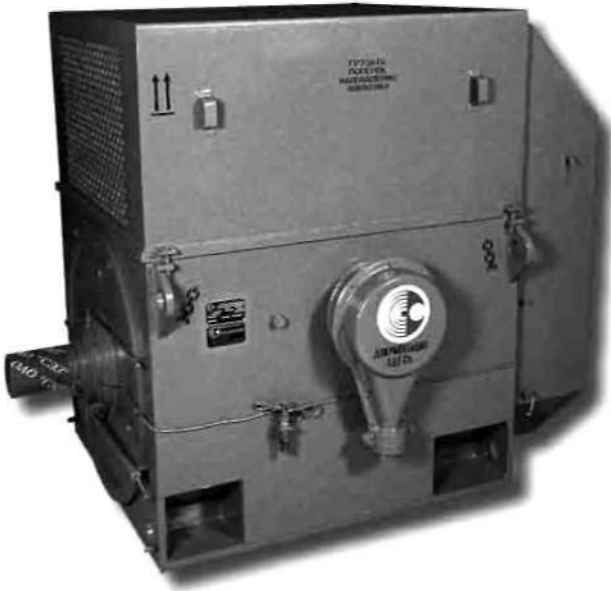


INDUCTION ELECTRIC MOTORS TYPE AOD



Induction three-phase squirrel-cage rotor motors series AOD are designed for driving mechanisms without speed regulation (pumps, fans, smoke exhausters and so on).

Motors are designed for operation at a voltage of 3000 V, 6000 V and 10000 V from the 50 Hz AC mains.

The motors for 3000 V will have dimensions of the 6000 V motors and the same power.

The 3000 V motors have a current twice that of the 6000 V motors.

Direct-on-line starting of the motor is ensured at the rated mains voltage as well as at the drop of mains voltage during starting up to 0.8 U_{nom} . Motors allow two successive startings when cold or one starting when heated. Subsequent startings should be made with at least three hour intervals. The total number of startings is 10000 for service life and 500 for a year.

Climatic versions - U1.

The rated duty - continuous S1.

Type of construction - IM1001.

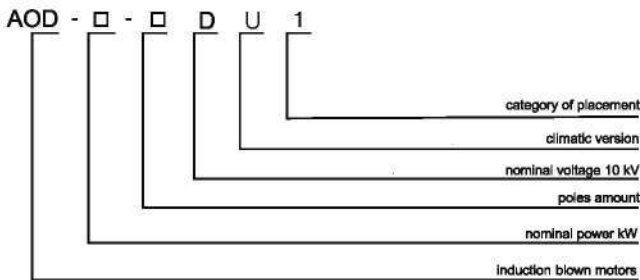
Cooling method - ICA01A61.

Degree of motor protection - IP54, terminal boxes IP55, external ventilator - IP21

Direct-on-line starting of the motor is ensured at the rated mains voltage as well as at the drop of mains voltage during starting up to 0.8 U_{nom} . Motors allow two successive startings when cold or one starting when heated. Subsequent startings should be made with at least three hours intervals, number of startings not more than 10000 for service life, but not more than 500 startings during a year. Motors are equipped with grease lubricated rolling-contact bearings. The temperature control for the bearings is provided by resistance thermotransformers. Motors are coupled with the driven mechanism with a help of flexible coupling. The stator winding insulation is of thermosetting type "Monolit-2". Type of heat resistance is not lower than "B". Stator winding has six leads brought out to four insulators in the terminal box. Stator windings are star-connected. The temperature control for stator winding and core is provided by six resistance thermotransformers put into the stator slots. Motors allow both clockwise and counterclockwise rotation. The reversal is from a stand-still.

Electric motors series AOD is equal to series DAZ04-560 in technical parameters and connecting dimensions.

Conventional signs structure for motors series AOD

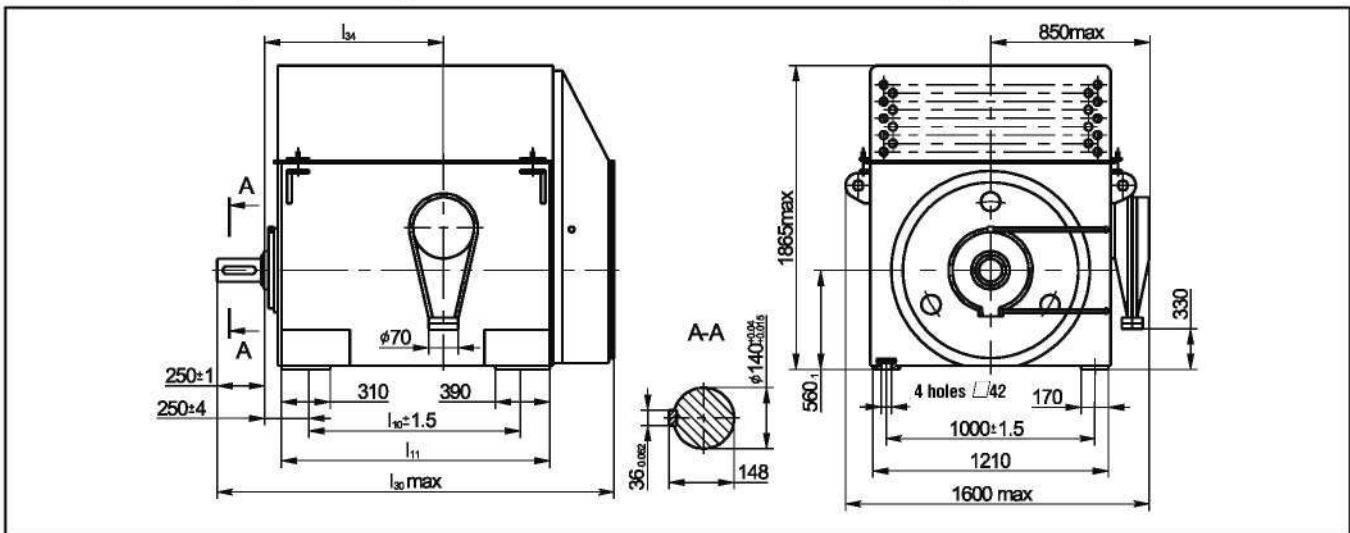


INDUCTION ELECTRIC MOTORS TYPE AOD

Specifications for electric motors type AOD of voltage 3 and 6 kV

Type	Power, kW	Synchronous speed of rotation, rpm	Direction of rotation	Efficiency, %	cosφ, o.e.	Stator current, A		Mmax Mnom	Ms Mnom	Iki Inom	Mass moment, kgm ²	
						3 kV	6 kV				of rotor	of mechanism, admissible
AOD-630-8U1	630	750	left and right	94.9	0.79	162	81	2.2	1.3	6.2	490	11 000
AOD-800-8U1	800	750		95.1	0.8	202	101	2.2	1.3	6	600	13 000
AOD-1000-8U1	1000	750		95.3	0.8	252	126	2.2	1.3	6	700	15 000
AOD-400-10U1	400	600		93.8	0.76	108	54	2.4	1.3	6.0	470	12 000
AOD-500-10U1	500	600		94.1	0.78	132	66	2.2	1.3	6.0	520	15 000
AOD-630-10U1	630	600		94.7	0.78	164	82	2.2	1.3	5.8	700	18 000
AOD-800-10U1	800	600		94.9	0.8	203	101.5	1.8	1.2	5.2	750	21 400
AOD-800-6U1	800	1000		95.0	0.85	192	96	2.2	1.2	6.5	390	6 000
AOD-1000-6U1	1000	1000		95.5	0.85	238	119	2.2	1.2	6.5	430	7 000
AOD-1250-6U1	1250	1000		95.8	0.86	292	146	2.2	1.2	6.5	520	8 000
AOD-1600-6U1	1600	1000	96.0	0.86	374	187	2.2	1.2	6.5	640	9 400	
AOD-1000-4U1	1000	1500	right	95.2	0.88	230	115	2.4	1.1	7.0	250	1 900
AOD-1250-4U1	1250	1500		95.5	0.88	186	143	2.5	1.1	7.0	280	2 200
AOD-1600-4U1	1600	1500		95.8	0.88	366	183	2.3	1.1	7.0	340	2 200
AOD-1000-4U1	1000	1500	left	95.2	0.88	230	115	2.4	1.1	7.0	250	1 900
AOD-1250-4U1	1250	1500		95.5	0.88	286	143	2.5	1.1	7.0	280	2 200
AOD-1600-4U1	1600	1500		95.8	0.88	366	183	2.3	1.1	7.0	340	2 200

Overall, mounting, connecting dimensions and mass of the motors type AOD



Type	l ₁₀	l ₁₁	l ₃₀	l ₃₄	Mass, kg
AOD-630-8U1	1000	1400	2190	930	5150
AOD-800-8U1	1250	1640	2430	1170	5700
AOD-1000-8U1	1250	1640	2430	1170	5950
AOD-400-10U1	1000	1400	2190	930	5100
AOD-500-10U1	1000	1400	2190	930	5300
AOD-630-10U1	1250	1640	2430	1170	5970
AOD-800-10U1	1250	1640	2430	1170	6150

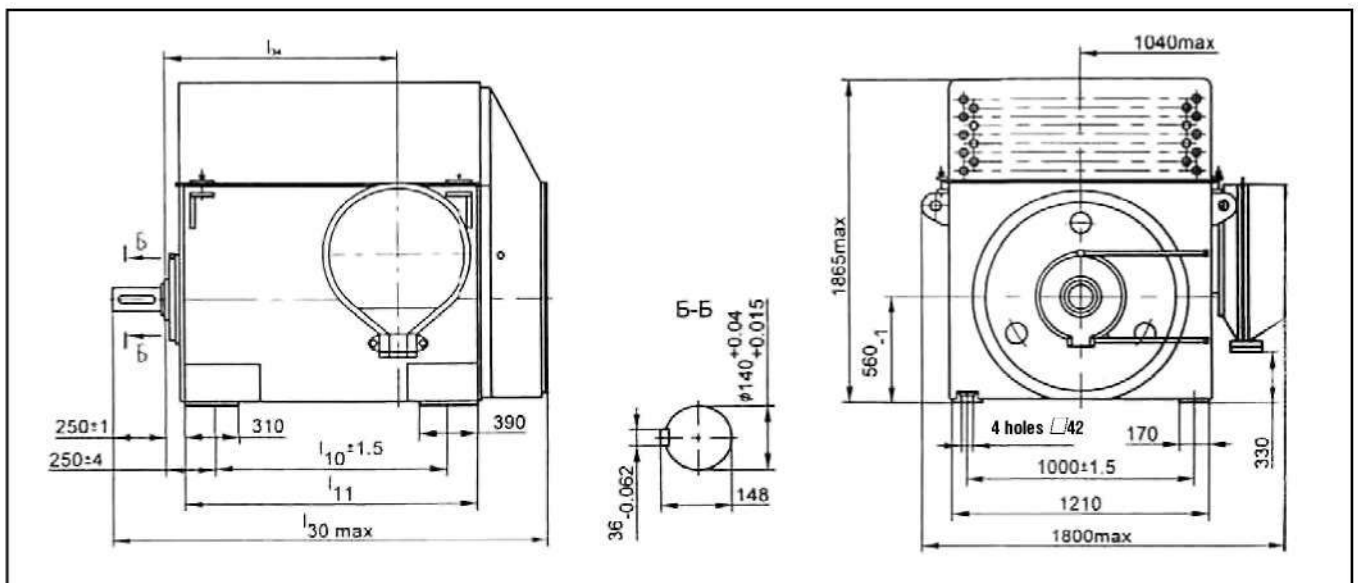
Type	l ₁₀	l ₁₁	l ₃₀	l ₃₄	Mass, kg
AOD-800-6U1	1000	1400	2190	930	5050
AOD-1000-6U1	1000	1400	2190	930	5330
AOD-1250-6U1	1250	1640	2430	1170	5980
AOD-1600-6U1	1250	1640	2430	1170	6440
AOD-1000-4U1	1000	1400	2190	930	4890
AOD-1250-4U1	1000	1400	2190	930	5140
AOD-1600-4U1	1250	1640	2430	1170	5820

INDUCTION ELECTRIC MOTORS TYPE AOD

Specifications for electric motors series AOD, (10 kV)

Type	Power, kW	Synchronous speed of rotation, rpm	Direction of rotation	Efficiency, %	cosφ, o.e.	Stator current, A	Mmax / Mnom	Ms / Mnom	Iki / Inom	Mass moment, kgm ²	
										of rotor	of mechanism, admissible
AOD-1000-4 DU1	1000	1500	right	95	0.88	69	2.2	6.5	1.0	230	1440
AOD-1250-4 DU1	1250	1500	right	95.3	0.88	86	2.2	6.5	1.0	285	1760
AOD-1600-4 DU1	1600	1500	right	95.6	0.89	109	2.2	6.5	1.0	320	2160
AOD-1000-4 DU1	1000	1500	left	95	0.88	69	2.2	6.5	1.0	230	1440
AOD-1250-4 DU1	1250	1500	left	95.3	0.88	86	2.2	6.5	1.0	285	1760
AOD-1600-4DU1	1600	1500	left	95.6	0.89	109	2.2	6.5	1.0	320	2160
AOD-800-6DU1	800	1000	left and right	94.9	0.84	58	2.3	6.5	1.2	415	4920
AOD-1000-6DU1	1000	1000		95.2	0.85	71	2.3	6.5	1.2	520	5600
AOD-1250-6DU1	1250	1000		95.5	0.86	88	2.2	6.5	1.2	555	6400
AOD-630-8DU1	630	750		94.5	0.78	49	2.1	5.5	1.2	500	8800
AOD-800-8DU1	800	750		94.7	0.8	61	2.1	5.5	1.2	645	10900
AOD-1000-8 DU1	1000	750		95	0.8	76	2.1	5.5	1.2	690	14000

Overall, mounting, connecting dimensions and mass of the motors series AOD (10 kV)



Type	l_{10}	l_{11}	l_{30}	l_{34}	Mass, kg
AOD-1000-4DU1	1000	1400	2190	930	4910
AOD-1250-4DU1	1250	1640	2430	1170	5540
AOD-1600-4DU1	1250	1640	2430	1170	5740
AOD-800-6DU1	1000	1400	2190	930	5270
AOD-1000-6DU1	1250	1640	2430	1170	5980
AOD-1250-6DU1	1250	1640	2430	1170	6130
AOD-630-8DU1	1000	1400	2190	930	5210
AOD-800-8DU1	1250	1640	2430	1170	5900
AOD-1000-8DU1	1250	1640	2430	1170	5950